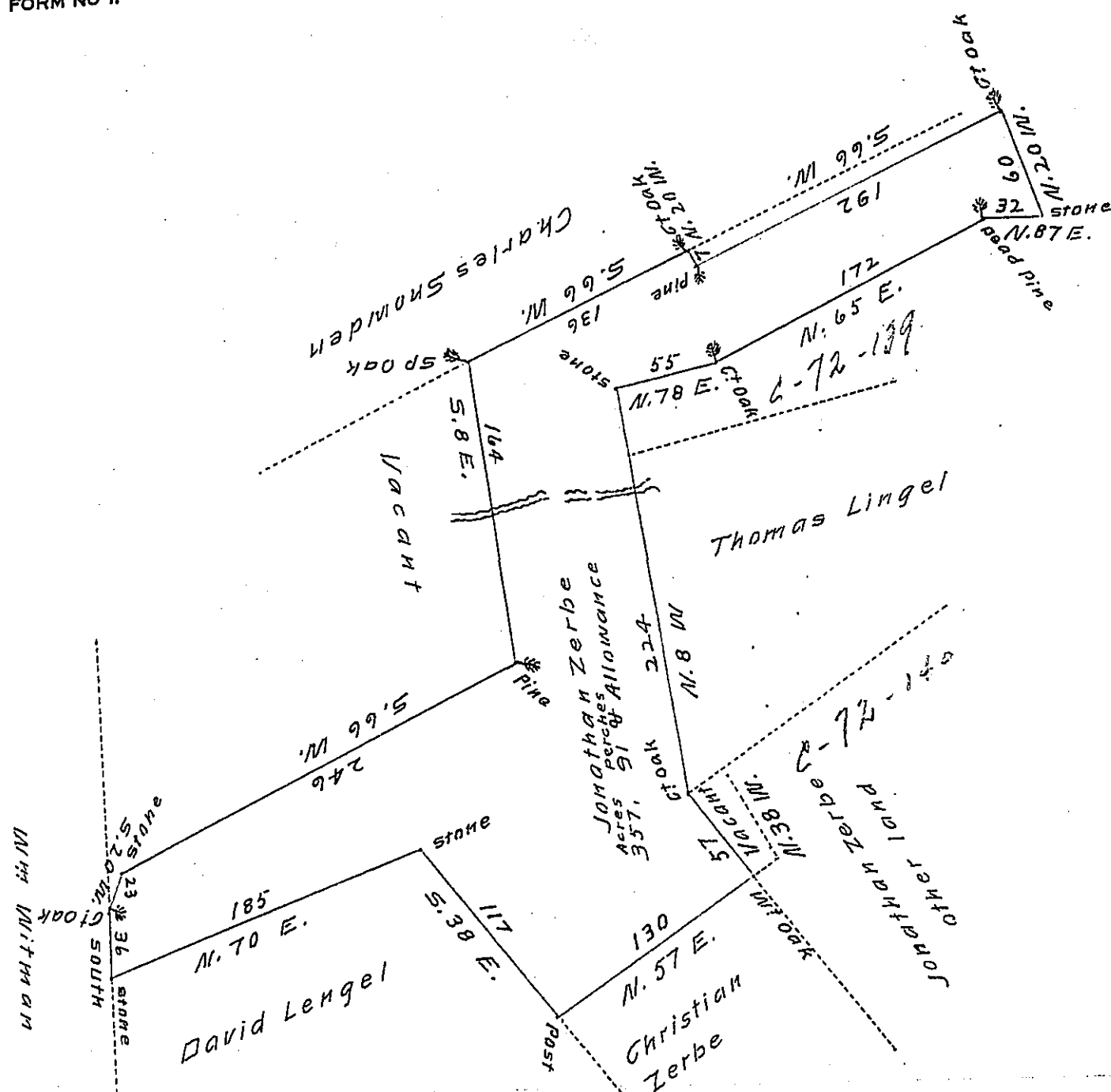


FORM NO 1.



Situate on the waters of Sivaterra in the Town-
 ship of Pinegrove in the County Schuylkill and
 surveyed the 6th day of September A.D. 1813 in pursuance
 of a warrant granted ^{to} Jonathan Zerbe dated the 24th day of
 May A.D. 1813 containing 357 As. 91 P & allowance per

James McFarland D.S.

To Andrew Porter Esq^r }
 Surveyor General

N.B The improvement on the above land consists in a house
 20 by 18 feet one story high, a stable, about 3 acres of upland
 cleared (no fruit trees) and some grain in the ground

J. McFarland D.S.

IN TESTIMONY that the above is a copy of the original remaining on file in
 the Department of Internal Affairs of Pennsylvania, made
 conformably to an Act of Assembly approved the 16th day of
 February, 1833, I have hereunto set my Hand and caused
 the Seal of said Department to be affixed at Harrisburg,
 this 21st day of Oct. 1907

Henry Houck
 Secretary of Internal Affairs.